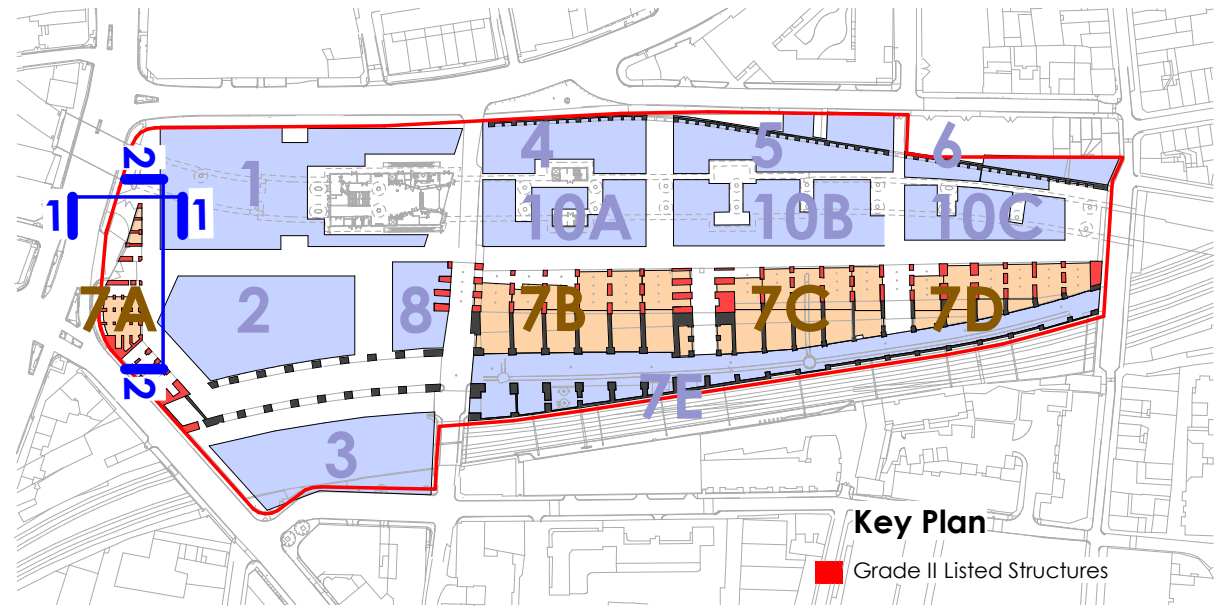


EXISTING BIRD'S EYE VIEW FROM SOUTH EAST - Southern and Western Arches (highlighted yellow) are to be removed leaving the Oriel Gateway as a stand alone building.

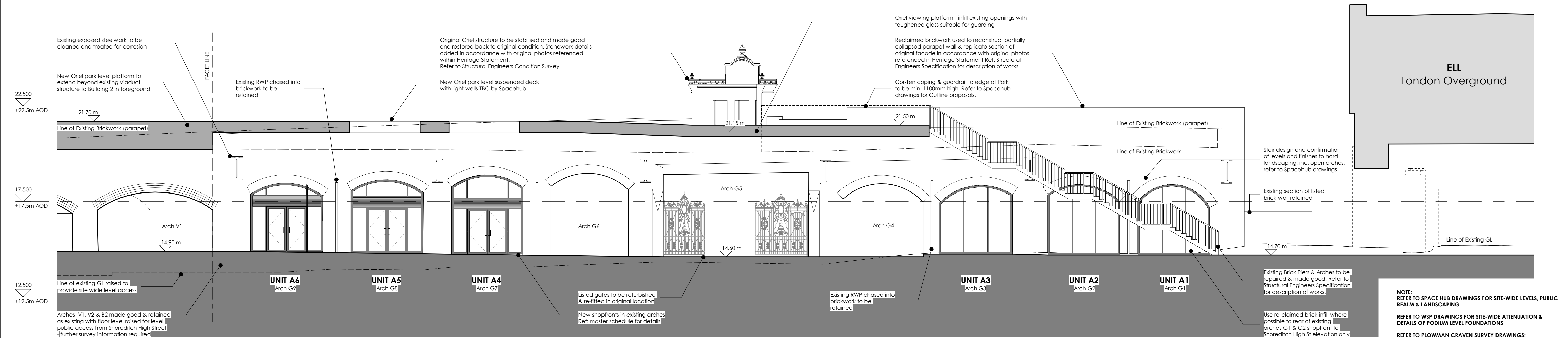


EXISTING EASTERN SIDE TO ORIEL GATEWAY - Partially collapsed lid & brickwork from previous demolition. Brickwork is irregular and unfinished. Fill material above arches lacks any retaining element to ensure stability of the remaining arches.



EXISTING NORTH EAST CORNER - Partially collapsed remnants of former arches from previous demolition for the London Overground. Fill material above arches lacks any retaining element to ensure stability of the remaining arches.

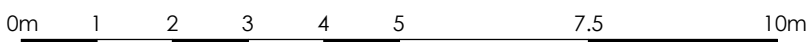
**1 Plot 7A61 - Proposed North Elevation**  
1 : 100



**2 Plot 7A61 - Proposed East Elevation**  
1 : 100

**KEY**

- AREA OUTSIDE SCOPE OF APPLICATION
- REFER TO STRUCTURAL, M&E & LANDSCAPE CONSULTANT PROPOSALS FOR DETAILS
- PROPOSED GOODYARD PLOTS OUTSIDE SCOPE OF PLOT 7 LBA



Do not scale this drawing  
Do not derive dimensions from digital media

Rev	Date	Drawn By	Checked By	Rev	Date	Revision Notes	Drawn By	Checked By	Rev	Date	Revision Notes	Drawn By	Checked By	Rev	Date	Revision Notes
														Drawing Status: <b>PLANNING</b> FOR LISTED BUILDING CONSENT		Suitability: <b>-</b>
														Job Title: <b>The Goodyard</b>		Job No: <b>3465</b>
														Drawing Title: <b>Plot 7A - Proposed Elevations Sheet 1</b>		
														Date: <b>April 19</b>	Scale: <b>As indicated</b>	Drawn By: <b>SO</b> Checked By: <b>PG</b>
														Drawing No: <b>BGY-FBA-07-XX-DR-A-00_10-7A61</b>		Rev: <b>P1</b>
														© Drawing & Design Copyright of:		
														<b>FAULKNERBROWNS ARCHITECTS</b>		
														FaulknerBrowns LLP Dorset House Northumbrian Way Killingworth Newcastle upon Tyne NE12 6DW T+44(0)191 2683007 F+44(0)191 2478132		